



Arise Policy Conference  
Understanding Alabama Medicaid Reform  
February 5, 2015

# 11 Probationary RCOs in Five Regions

## Regional Care Organization Districts

### Region A

RCO Population: 123,302

- Alabama Community Care  
(Huntsville Hospital & Sentara)
- My Care Alabama  
(BCBSAL & Eliza Coffee Mem. Hosp.)
- Alabama Healthcare Advantage North

### Region B

RCO Population: 226,199

- Alabama Care Plan  
(UAB, St. Vincent's & Triton)
- Alabama Healthcare Advantage East

### Region C

RCO Population: 62,607

- Alabama Community Care  
(DCH, Sentara, Hunts. Hosp., Capstone Health Services, others)
- Alabama Healthcare Advantage West

### Region D

RCO Population: 175,941

- Care Network of Alabama  
(EAMC, SAMC, Baptist Health, UAB, Triton)
- Alabama Healthcare Advantage

### Region E

RCO Population: 111,941

- Gulf Coast RCO  
(USA Med. Ctr & AltaPoint)
- Alabama Healthcare Advantage South



Probationary RCOs must achieve periodic milestones to remain on track to gain full certification by Oct. 1, 2016

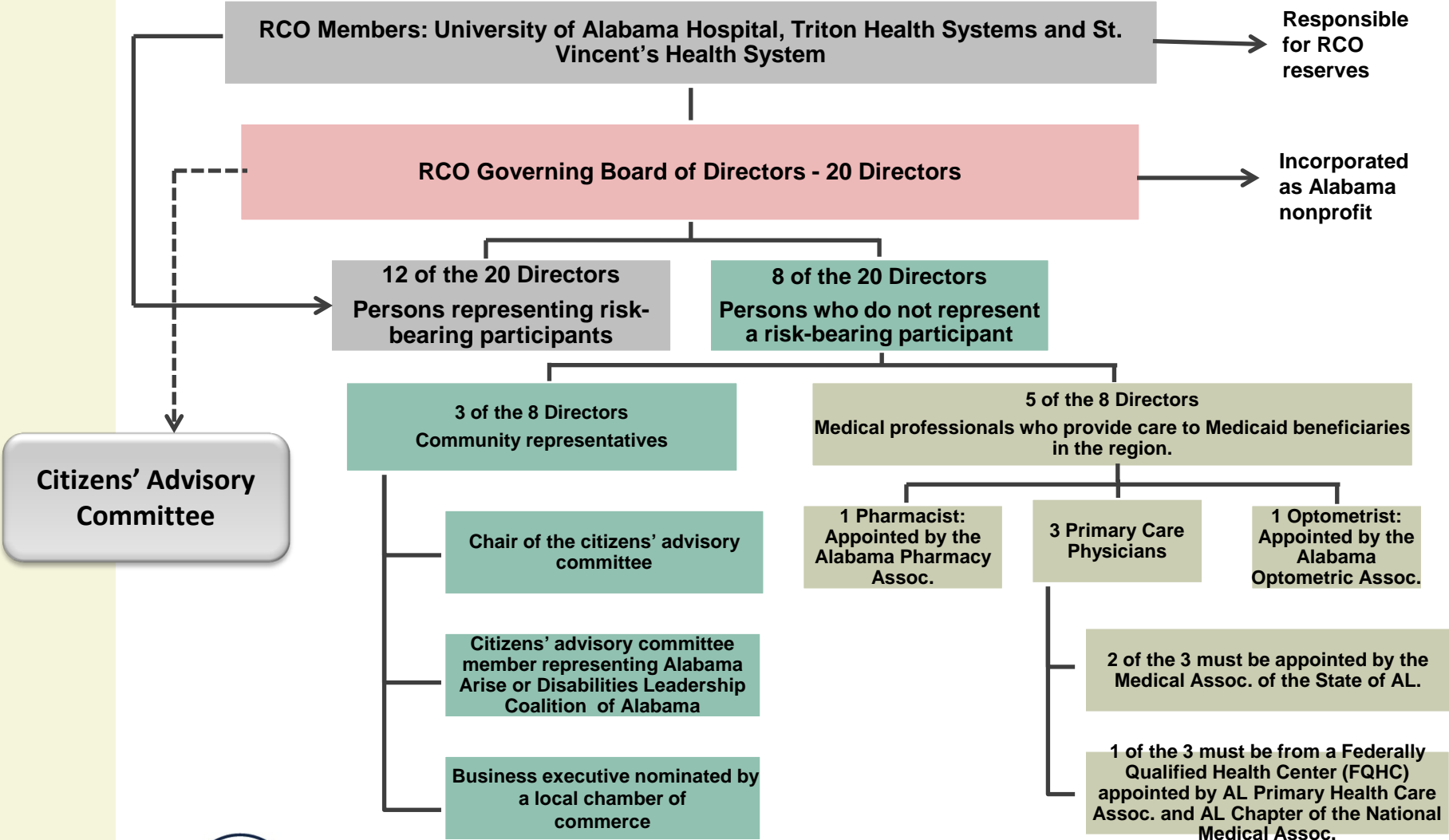


---

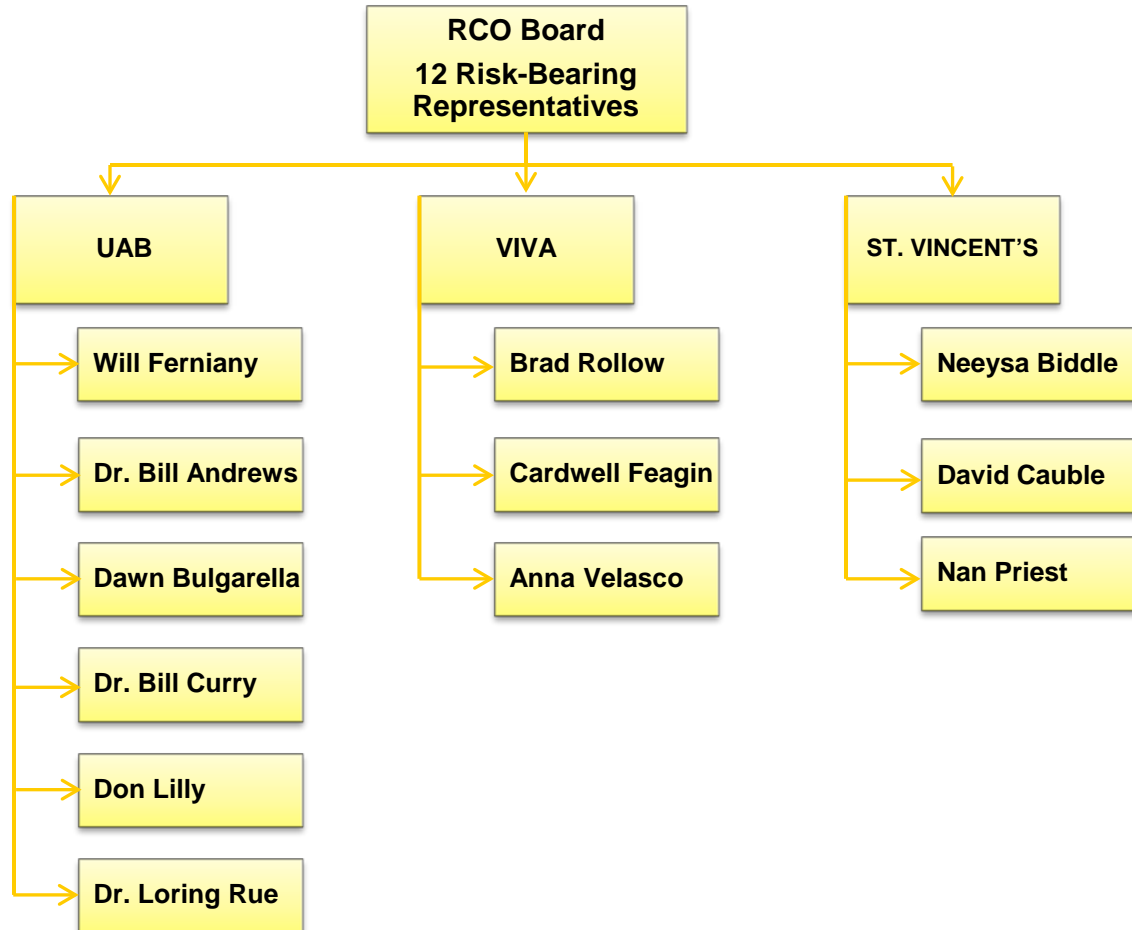
# Alabama Care Plan Organization



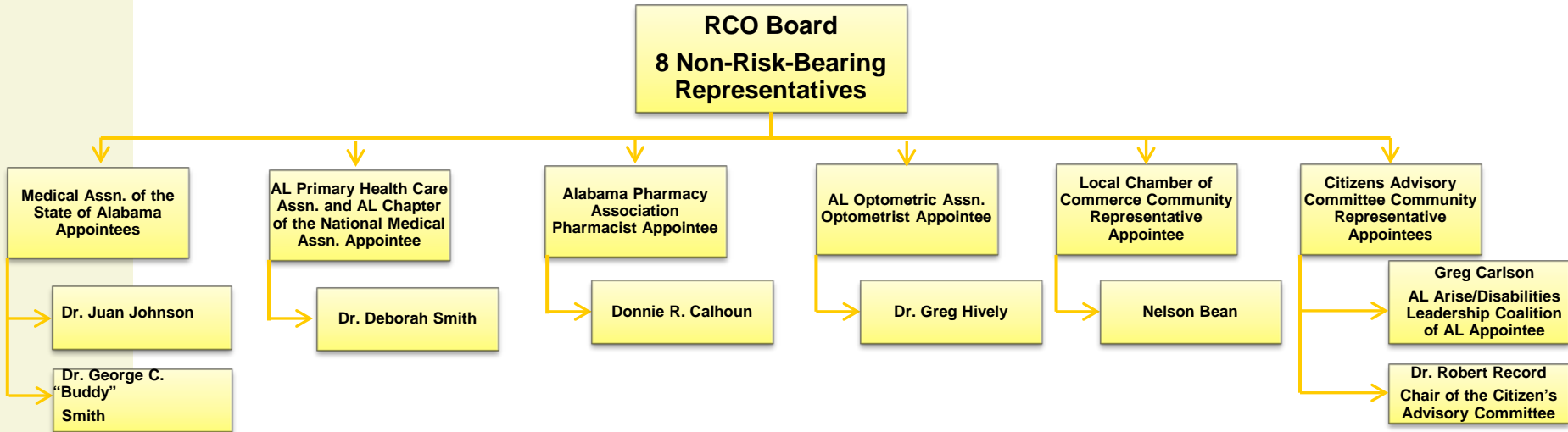
# Alabama Care Plan



## Risk-Bearing Representatives



## Non-Risk-Bearing Representatives



# Citizens' Advisory Committee Members

1. Bettina Byrd-Giles: Jefferson County
  - CEO of The Bethesda Life Center; Nominated by Alabama Arise
2. Gregory J. Carlson: Shelby County
  - Vice-president of planning and development at Glenwood Autism and Behavioral Health Center of Alabama; Nominated by Disabilities Leadership Coalition
3. Kaylon Buchanan: Jefferson County
  - Consumer representative
4. Susan Carter: Etowah County
  - Director of 2-1-1/First Call For Help, a program of United Way of Etowah County
5. Lisa Eason: Tallapoosa County
  - Consumer representative
6. Ryan Hankins: Jefferson County
  - Executive Director of M-Power Ministries
7. Dr. Jacqueline Feldman: Jefferson County
  - Retired psychiatrist
8. Rev. Eric D. Harris: Jefferson County
  - Pastor of Agape Worship Ministries
9. Benjamin R. Hedrick: Shelby County
  - Consumer representative, Founder of the Hedrick Foundation
10. Judge Bill Hereford: St. Clair County
  - Circuit Court Judge and former Pell City Mayor
11. Jean Hernandez: Jefferson County
  - AIDS Alabama Hispanic Outreach Coordinator
12. Matthew Holdbrooks: Jefferson County
  - President of Kid One Transport System
13. Dr. Robert Rex Record: Jefferson County
  - CEO and medical director of Christ Health Center; Physician who treats Medicaid adults and children
14. Dr. James Weems, Jr.: Talladega County
  - Pediatrician who treats Medicaid children
15. Mary (Susan) Williams: Clay County
  - Social Worker for Clay County Hospital



- Be inclusive and reflect racial, gender, geographic, urban/rural and economic diversity of the region
- Have Medicaid beneficiaries  $\geq$  20% of its members
- Include members who are representatives of Alabama Arise or Disabilities Leadership Coalition of Alabama
- Include only people within the Medicaid region





# Citizens' Advisory Committee Charge

---

- Meet at least every three months
- Advise RCO on ways to be more efficient in providing quality care to Medicaid beneficiaries
- Other duties as assigned by RCO



# Citizens' Advisory Committee Issues for each RCO to decide

---

- Size of committee?
- How to select committee members to reflect the region?
- How will the RCO act on recommendations of CAC?



- 15-member committee
- Representatives from half of region's 16 counties
- Treated as think tank for RCO
  - ◆ One of first goals is to address integration of behavioral health care with physical health
  - ◆ Work group of committee already forming to dig deeper into issues between quarterly meetings



# Challenges with diverse representation

---

- Law prescribed diverse RCO board as well as CAC
- Diversity brings challenges
  - ◆ Geographic diversity means in-person meetings difficult for many
  - ◆ Health care system knowledge gap must be bridged for meaningful participation by all
- RCO must find ways to benefit from all board and committee members' input



---

# Health Home



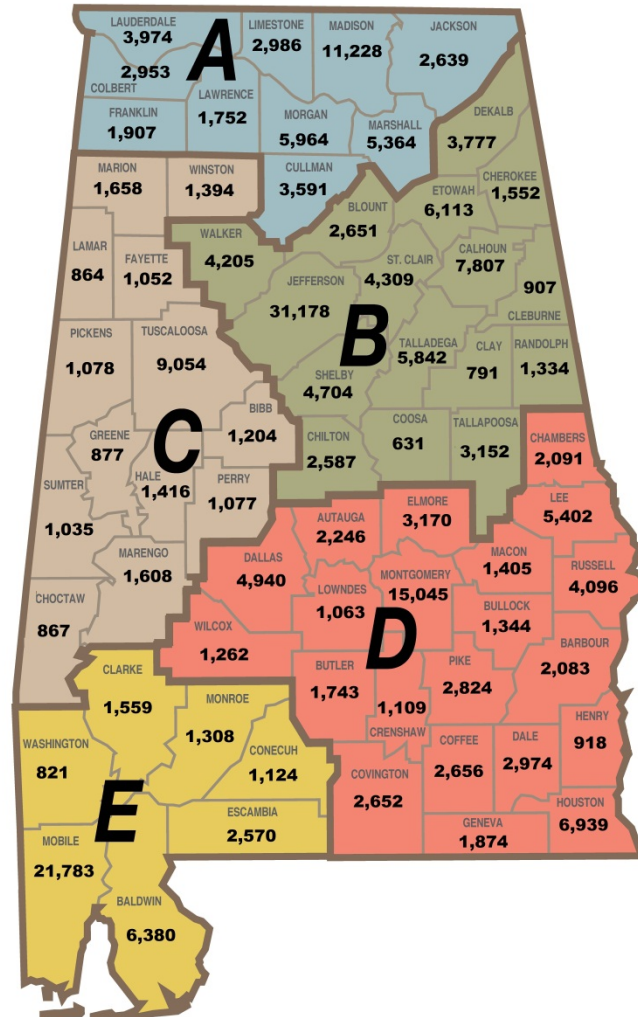
- Probationary RCO may apply to become health home as of April 2015
- Health homes will manage patients with chronic health needs
- Health homes have been piloted in four areas of state
  - Known as patient care networks today
- Health homes allow RCO to get most complicated patients under care management before being at risk
- Many Patient 1st providers to receive enhanced monthly care management fee from Medicaid if they participate in health home
- Federally qualified health centers and rural health centers may participate in health home but do not get enhanced fee for their participation



# Health home population

## Health Home Population

Total population of Regions A, B, C, D, & E: 250,463



- ✓ Improve health outcomes for Alabama Medicaid Patient 1st Population
- ✓ Help primary care providers effectively manage patients with chronic conditions
- ✓ Improve communication across care settings
- ✓ Integrate behavioral health with physical health
- ✓ Empower patients to self-manage their conditions
- ✓ Reduce the cost of care





- Eligibility for Health Home Services
  - ◆ Two or more chronic conditions
  - ◆ One chronic condition and risk for a second
  - ◆ A serious and persistent mental health condition



- No cost to provider or patient
  - ◆ Patient 1<sup>st</sup> primary care physician contracts with health home and health home provides services
    - ◆ Medicaid pays monthly care management fee to providers (except FQHCs & RHCs) and to health homes
  - ◆ Providers agree to quarterly meetings to discuss key initiatives with health home

- Executive director
- Medical director
- Nurses
- Social workers
- Community health workers



- Role is to serve as liaison for Medicaid recipients to ensure access to all needed services
  - ◆ Must have
    - ◆ High school diploma or GED
    - ◆ Valid driver's license



Questions?

